



Buckingham Avenue, Whetstone, N20 9BT
£332,950 Leasehold Council Tax Band C

REAL ESTATES
Est.1981

Estate Agents · Residential Sales · Investments · Lettings

Real estates are delighted to offer for sale this this bright 2 bedroom ground floor maisonette within a stone's throw of Whetstone High Road's shops, boutiques, cafes as well as M&S Foodhall and Waitrose. Totteridge & Whetstone Tube Station (Northern Line) and Oakleigh Park Railway Station are just a few minutes walk.

The property comprises a spacious reception room, 2 double bedrooms, bathroom and kitchen leading to the garden which is shared with the apartment upstairs. Lease of 143 years.

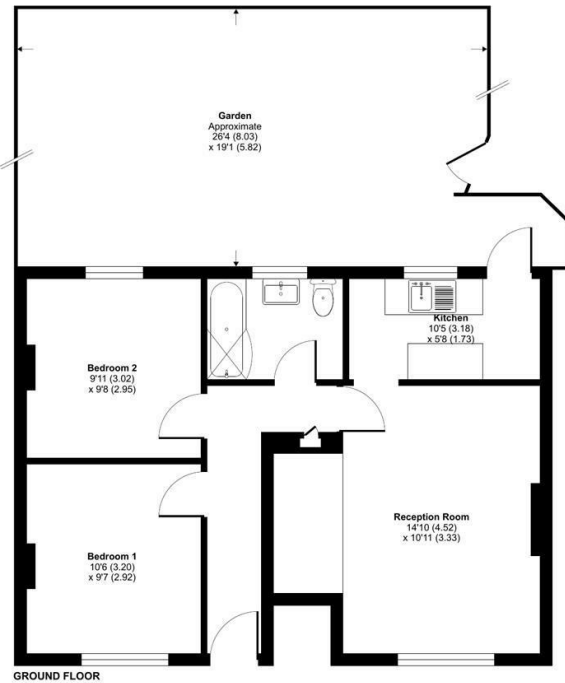
Early viewing recommended via the sellers sole agent. Chain Free.





Villiers Court, Buckingham Avenue, London, N20

Approximate Area = 575 sq ft / 53.4 sq m
For identification only - Not to scale



Floor plan produced in accordance with RICS Property Measurement Standards incorporating International Property Measurement Standards (IPMS Residential). © nrichcom 2023. Produced for Real Estates - REF: 1005204

Energy Efficiency Rating		
	Current	Potential
Very energy efficient - lower running costs		
A		
B		
C	72	78
D		
E		
F		
G		
Not energy efficient - higher running costs		
EU Directive		

